

# AIRSCRUB

## Air Purifier

### Industrial Series

# APX



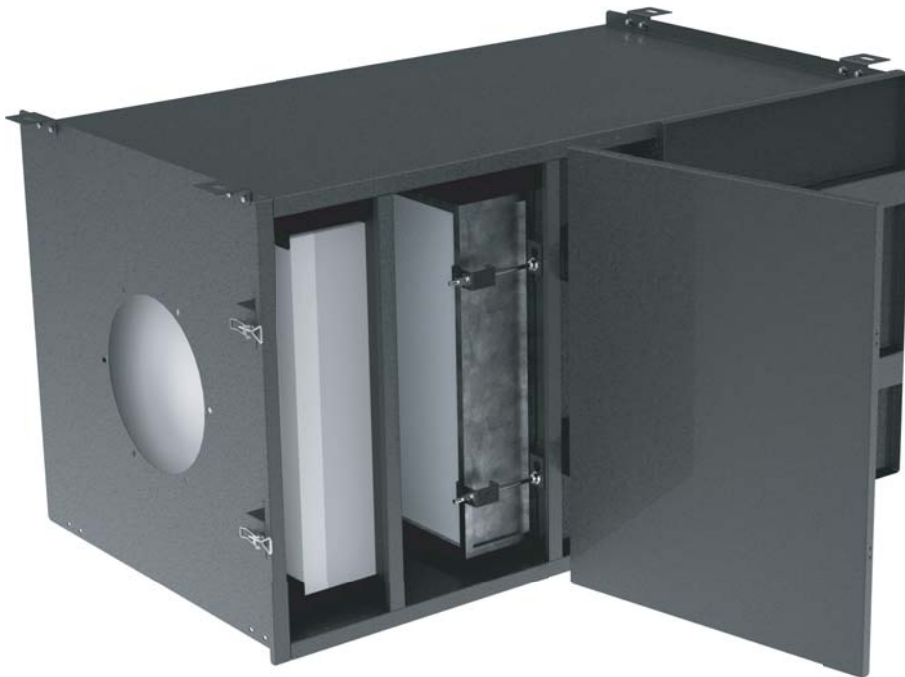
### Features

- Up to 1900 CMH Airflow Volume
- Pre-Filter Class G4
- Medium Filter Class F8
- HEPA Filter Class H14
- UVC Germicidal Lamp 30W
- Backward-Curved Impellers
- German EC Motor IP55
- Direct Drive
- Stepless Speed Control
- Differential Pressure Gauge
- EG Steel Construction 1.2mm
- Powder Coating Finish

X-Per Technia (Thailand) Co., Ltd.

29/33-35 Moo 11, Boromrachachonnani Rd., Salathammasop, Taweewattana, Bangkok 10170. Thailand.  
Tel: +66-2-888-2995 to 8 Fax: +66-2-888-2994 email: [inquiry@xperasia.com](mailto:inquiry@xperasia.com) url: [www.xperasia.com](http://www.xperasia.com)

 AirScrub



The construction of APX series are made of EG Steel with powder coating finish. The impeller is Backward-Curved Centrifugal, made from Aluminum, directly driven. The motor used is EC motor, totally enclosed type with rating of IP55. Speed control is stepless.

Pre Filter class G4, Medium Filter class F8, HEPA Filter class H14, and UVC germicidal lamps are standard. Optional accessories such as Carbon filter, Plasma Ionizer, etc. are available upon request.

Inlet and outlet can be customized as per customers' requirements. Common options are round or rectangular duct, diffuser, flexible duct, etc.

		APX-120	APX-180
Air Flow	Initial (@350Pa)	1700 CMH	2500 CMH
	Final (@750Pa)	1200 CMH	1800 CMH
Housing	Depth x Height	750 mm (D) x 700 mm (H)	
	Length	1200 mm (L)	1450 mm (L)
	Material	EG Steel 1.2mm THK with Polyester powder coating	
Pre Filter	Media	Synthetic Fibre	
	Type	Disposable Pleated Panel	
	Arrestance	90-92% (G4)	
	Size	24" x 24" x 2"	
Medium Filter	Media	Glass Fibre	
	Type	Disposable Pleated Panel	
	Arrestance	90-95% (F8)	
	Size	24" x 24" x 4"	
HEPA Filter	Media	Glass Fibre	
	Efficacy	99.999% on 0.3 micron (H14)	
	Size	24" x 24" x 6"	24" x 24" x 12"
Accessories	UVC Lamp	15W x 2	
	Gauge	Differential Pressure Gauge (across HEPA Filter)	
Fan	Impeller	Backward-Curved Aluminum Centrifugal Impeller	
	Motor	EC Motor IP55	
	Input	230V/1Ph/50Hz	
	Power	520W	700W